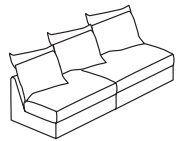
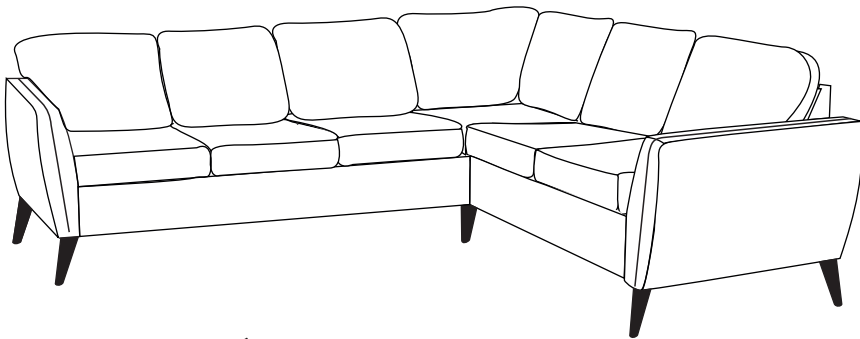
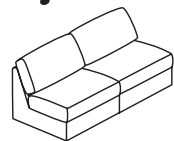


COUNTY / MONTANA

Hörnsoffa 3+2 assembly



Montana



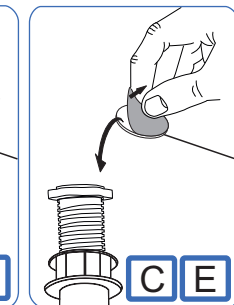
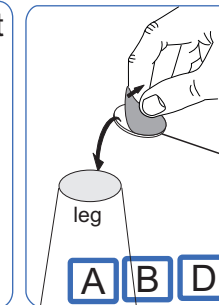
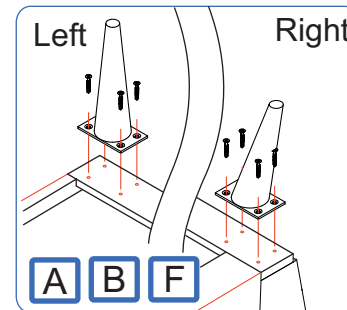
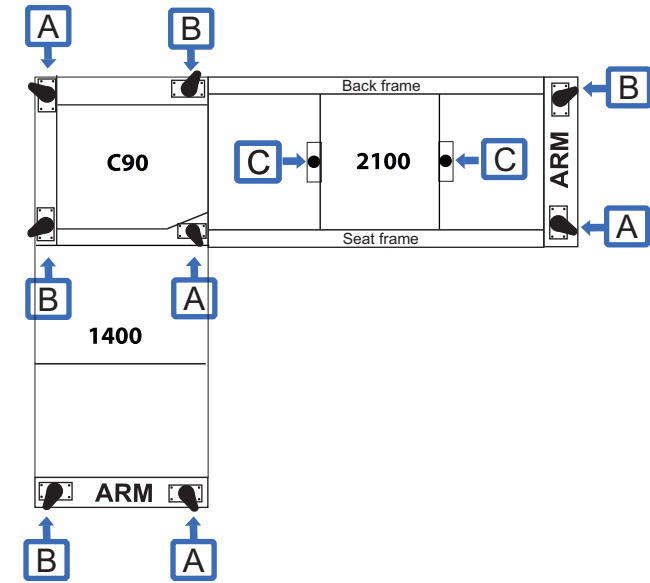
County

Components - Fittings

A Left 4 x	B Right 4 x	C 2 x	D Ø 16 8 x Felt	E Ø 27 2 x Felt
F 3.5X30 32 x				

Important!

The legs must be checked after some time of using.
If is it necessary tightened / screwed again.



Important!

screw it to the leg height
to the floor

Connect plastic support legs to the pre drilled holes.

